



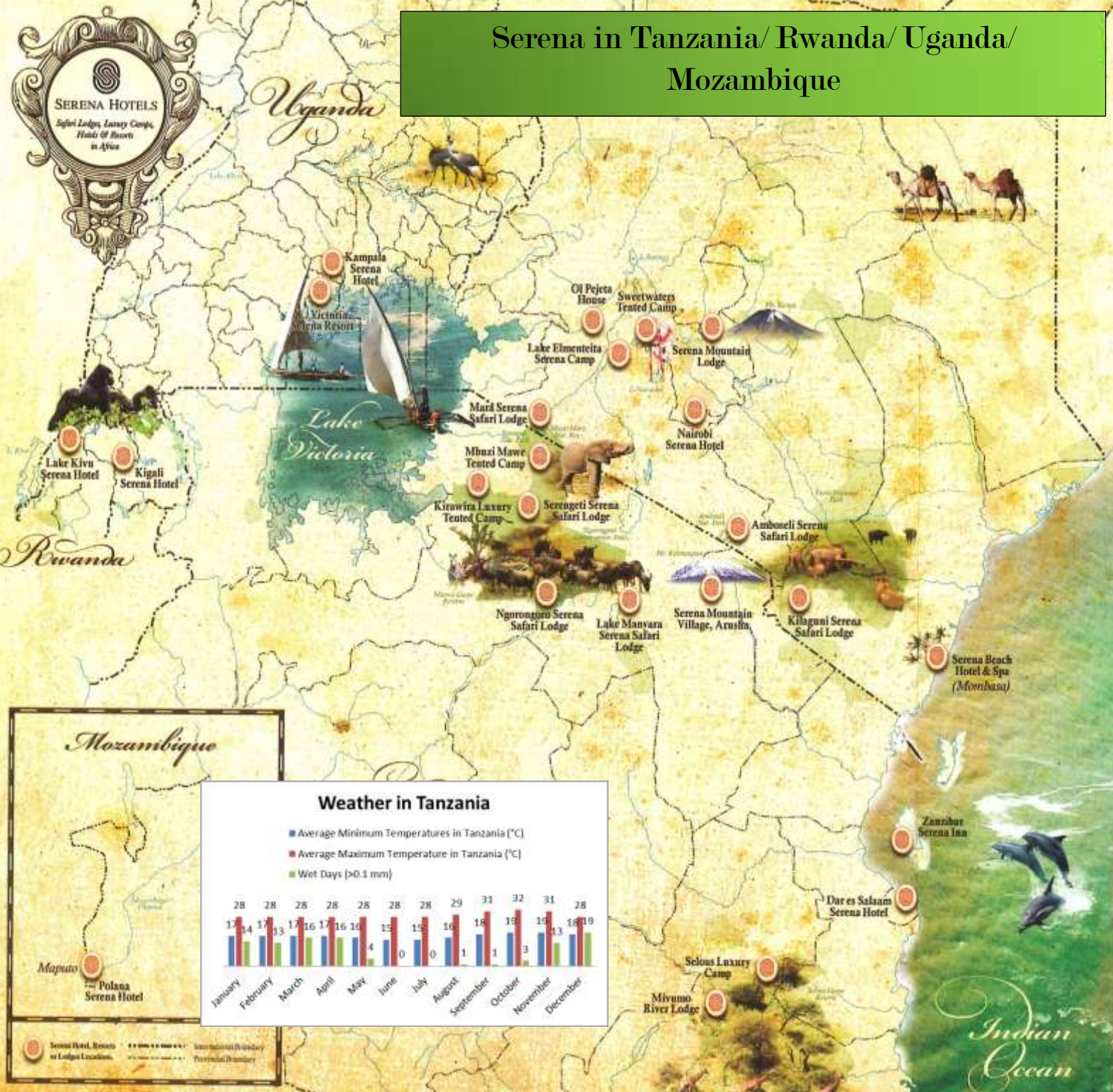
Serena in Tanzania/ Rwanda/ Uganda/ Mozambique



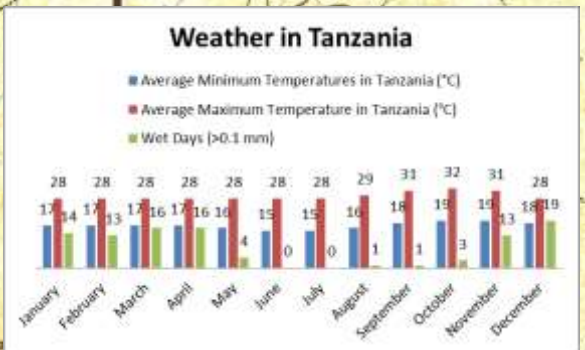
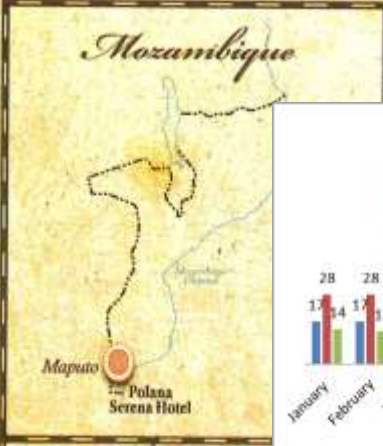
SERENA HOTELS

SAFARI LODGES • HOTELS • RESORTS

www.serenahotels.com



- ### Why Serena?
- Strong & highly regarded Brand
 - Prime Locations
 - Buildings 'at one' with the landscape
 - High & Consistent Standards
 - People come first



ethos marketing
 professionally, positively, occasionally Africa

info@ethosmarketing.co.uk

01403 243 619

Serena in Tanzania/ Rwanda/ Uganda/ Mozambique – Where? Why go there?

<u>Hotels</u>	<u>Resorts</u>	<u>Lodges</u>	<u>Camps and Small Lodges</u>
<p>Polana Serena Hotel (Mozambique)</p> <ul style="list-style-type: none"> • 15 mins from Maputo airport and the City • Stunning views over the Bay of Maputo • Hotel is truly the ‘Grand old dame of Maputo’ • Colonial charm, African appeal & world class service and hospitality • Visit local restaurants and vibrant markets • Explore Maputo on a walking city tour <p>Kigali Serena Hotel (Rwanda)</p> <ul style="list-style-type: none"> • 10 kms from the airport • Ideal base for gorilla trekking • Sophisticated & recently updated hotel • Places of interest – Giconji Genocide Memorial, Kigali City tour, Akagera National Park, Nyungwe Rain Forests <p>Lake Kivu Serena Hotel (Rwanda)</p> <ul style="list-style-type: none"> • A beach resort on the shores of Lake Kivu • Relax on the sandy shore after gorilla trekking • Virunga volcanoes form spectacular backdrop • Outdoor pool, gym & tennis courts • Mountain trekking, boat trips, hot springs, Chimp & Gorilla sanctuary <p>Kampala Serena Hotel (Uganda)</p> <ul style="list-style-type: none"> • A member of <i>The Leading Hotels of the World</i> • Just 40 min from Entebbe Airport • Gateway for Gorilla Safaris • Set in extensive gardens <p>Dar es Salaam Serena Hotel</p> <ul style="list-style-type: none"> • An oasis of calm in the centre of the city • Within walking distance of all that the city centre has to offer • Perfect gateway to the Selous Game Reserve • Swimming Pool, Poolside brasserie and extensive tropical gardens • International restaurant and coffee shop 	<p>Zanzibar Serena Hotel</p> <ul style="list-style-type: none"> • 15 minutes from the airport • On the edge of historic Stone Town • The Serena Inn is evocative of its history as an 18th century house - Exotic, atmospheric, elegant & steeped in history • Colourful Spice Tours, Dhow trips, • Scuba Diving, snorkelling, dolphins, humpback whales, turtles • Explore the winding streets of Stone Town with its history of spice and slave trading • Enjoy Jozani Forest home to the Red Colobus monkeys • Snorkel & laze on Serena’s Mangapwani Beach & enjoy an exotic seafood lunch – 40 min transfer <p>Lake Victoria Serena Resort (Uganda)</p> <ul style="list-style-type: none"> • Entebbe International Airport 35 kilometres • Situated on Africa’s largest freshwater lake • All day restaurant, Fine dining restaurant, lounge and pool bars • Island excursions & boat trips – Ngamba Island Chimp sanctuary • Tour of Kampala City & an African Craft Village • Visit Jinja, the source of the Nile or Owen Falls 	<p>Lake Duluti Serena Hotel</p> <ul style="list-style-type: none"> • Gateway to the spectacular national parks • Nestled in a coffee plantation above Lake Duluti • Exotic tropical gardens & mountain views • Lake shore walks, canoeing, lake-side dining <p>Ngorongoro Serena Safari Lodge</p> <ul style="list-style-type: none"> • 4 hours from Arusha – mega location! • Set right on the rim of this World Heritage site • All rooms look down into the 600m Crater floor • Game drives/nature walks, Masai cattle markets <p>Serengeti Serena Safari Lodge</p> <ul style="list-style-type: none"> • 335 kms from Arusha or fly in • Perfectly situated for the migration • Full safari programme • Walking safaris, hike with sundowners • Panoramic views across the Serengeti <p>Lake Manyara Serena Safari Lodge</p> <ul style="list-style-type: none"> • 2.5 hours from Arusha • Spectacular views across the soda lake to the far escarpment of the Great Rift Valley • Morning, afternoon & night game drives • Boat trips & canoeing safaris • Bicycle trails • Extraordinary birdlife around the lake – especially birds of prey • Wildlife talks • Stunning swimming pool and bar 	<p>Kirawira Luxury Tented Camp</p> <ul style="list-style-type: none"> • A member of <i>Small Luxury Hotels of the World</i> • Key area for the great migration – Western corridor • Balloon safaris, Lake Victoria fishing, crocodile safaris • Enjoy a la carte meals in the elegant dining tents – capturing the romance of a bygone era <p>Mbuzi Mawe Tented Camp</p> <ul style="list-style-type: none"> • Views across the Serengeti from its unspoilt rocky outcrop setting • Positioned on central migration corridor • 16 spacious tents with 2 Queen size beds • Intimate and authentic <p>Selous Serena Camp</p> <ul style="list-style-type: none"> • 45 minute flight from Dar es Salaam to Stiegler’s Gorge plus 30 minute ‘game drive’ to the camp • 12 luxurious tents reflecting an age of romantic safari complete with foot & claw bath • Elegant dining tent with meals to match – all inclusive – overlooking waterhole • Walking, boat and private open vehicle safaris • Bathing in the natural hot springs <p>Serena Mivumo River Lodge</p> <ul style="list-style-type: none"> • 45 minute flight from Dar es Salaam to Stiegler’s Gorge plus 30 minute ‘game drive’ to the camp • 12 elegant and extremely spacious & private chalets on the banks of the mighty Rufiji River • Outdoor showers, individual plunge pools, private decks • A la carte dining with dramatic river views • Bush & sandbank picnics • Walking, boat and private open vehicle safaris • Bathing in the natural hot springs • 3 Bedroom stand alone villa